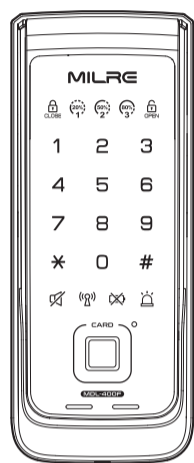


USER MANUAL MDL-400F



Notice

Please read this manual before installation and operation. If there is no exact entry on warranty form, you should be disadvantaged on A/S. The function and design will be changed without notice to improve the performance. Thank you for purchasing this product. Please use properly after reading this instruction carefully.

Safety precautions

- Do not disassemble or alter the lock. Assembling or disassembling the door lock may damage the product. Damage to the product caused by unauthorized persons may result in damages to your property. Please contact our Customer Service. If the product generates gases or smoke, please remove the batteries immediately from the product. If you do not take this step immediately, the product may suffer severe damage. Please keep the product away from water or any liquids. If the product is exposed to salty water or liquids, please wipe off the moisture with a soft cloth. If moisture or foreign materials penetrate the product, remove the batteries immediately and contact the Service Agency or Customer Service Center for advice. Using a product contaminated with foreign materials may cause problems. Please check the batteries every 6 months to see if the batteries are leaking and to check the cleanliness of battery terminals. If leakage is discovered, please wipe out with a dry cloth and replace with new batteries. Do not clean the product with flammable materials such as alcohol, benzene or thinners. Such materials may damage the surface or cause a fire. Batteries should not be exposed directly to heat sources or flames, or submerged in water because they may leak or explode resulting in severe damage. Please do not use damaged batteries. Do not allow the battery electrodes to make contact with metals such as keys, as the battery may overheat causing an explosion or severe damage. Please do not close the door with the deadbolt in the locked position. It may damage the product or cause a malfunction. Do not attempt to remove the front cover as the product may be damaged during the process. We recommend using new batteries of the same type and brand in order to avoid issues such as over-discharge and leakage. It may damage the product when installed on a heavy dew condensation door. Dew condensation; small drops of water that form when warm air touches a cold surface. Please check the environment of installation area. Heavy dew condensation may damage the product or cause a malfunction.

Product features

- Three way solution. (PIN code, Card / Fob, Fingerprint) Available to use PIN code as well as Card / Fob and Fingerprint. Normal mode/safety mode Normal mode is ideal for new users or low security environments Safety mode provides a higher security level via use of a manager PIN code. Allows individual register and delete function which is not provided in normal mode. Random security coding function When you enter your home with other people, you may not want to show your PIN code to them. In this case, you may press any numbers randomly and then enter your PIN code at the end and you will still gain access. Prevent mischief & hacking After multiple incorrect attempted entries an alarm will sound and all the functions of the lock will be suspended for three minutes. The alarm activates after three incorrect PIN/card entries and five incorrect fingerprint entries. Trespass alarm function When the door is opened by force an alarm will sound. Auto relock function If users do not open the door after unlocking the device it will lock itself automatically. Double lock function When double lock function is activated, the door cannot be opened from the outside, even with the registered card, PIN code or fingerprint. Override key can still be used. Voice guide and 3 step volume control system Voice guide (operation status, menu selection.) and provide 3 step volume control system. Mute function Door will not emit any sound when mute is activated. Low battery indicator and alarm for battery replacement Easy to check battery status with three step level indicator and alarm when battery replacement is required.

Product composition and components

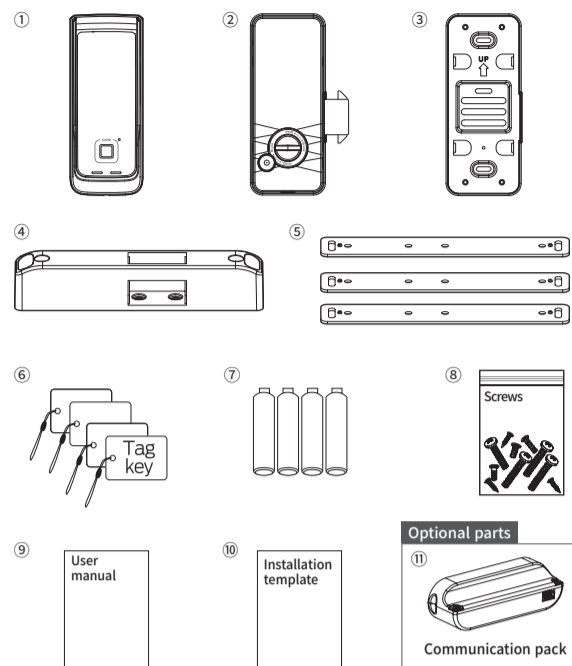


Table with 3 columns: Name, product specification, remark. Lists components like Front Ass'y, Back Ass'y, Back bracket, Strike, Strike housing, Card / Fob, Battery, Screws, User manual, Installation template, Communication pack, and Installation condition.

Name and function of each part

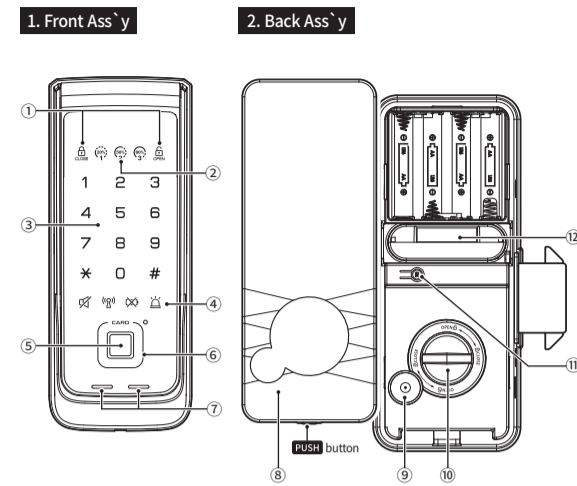


Table with 2 columns: Name, Description. Lists parts like Lock / Unlock lamp, Status indicator, Touch Keypad, Window icon, Fingerprint sensor, Card / Fob touch plate, External power supply, Battery cover, Open / Close button, Thumb turn, R button, and Connection terminal for communication pack.

Description shortcut icons

Table mapping icons to functions: [R] button, [*] button, [#] button, Touch Keypad, 9V alkaline battery, PIN code, Card / Fob, Fingerprint, Unlock, Lock, Trespass alarm, User code, Manager code, Registration code, Random code.

How to apply external power in the emergency



How to use random security coding function



How to unlock / lock from outside

How to unlock from outdoor: PIN code, Card / Fob, Fingerprint. How to unlock from outdoor (Mute function): PIN code, Card / Fob. How to lock [Auto lock / Manual lock] from out door: Auto lock, Manual lock. How to set Auto locking / Manual locking: Auto lock, Manual lock.

Note: In Auto locking mode, door will be locked automatically after closing. In Manual locking mode, door will be locked with pressing manual lock button after closing. Please do the change/registration of new code at door opened status to prevent unintentional locking.

Description shortcut icons

Table mapping icons to functions: [R] button, [*] button, [#] button, Touch Keypad, 9V alkaline battery, PIN code, Card / Fob, Fingerprint, Unlock, Lock, Trespass alarm, User code, Manager code, Registration code, Random code.

How to replace battery

If battery indicator is blinking RED and alarm sounds, open battery cover and replace all batteries, 6V(1.5V "AA" size LR6 Alkaline)

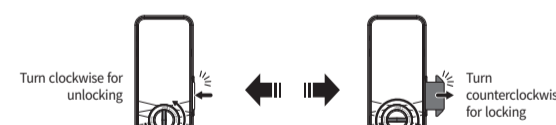
Additional function

How to control voice guide volume: Min, Mid, Max volume. Guest PIN code (Temporary use): REG, PIN, Card, Fob, #, 2, RC, #, RC, #. How to control operation volume: Vol. up, Vol. down. Status checking guide: Voice guide, Check battery capacity, Checking the battery. Warning function against illegal entry or hacking: Operate, Wrong PIN code three times/unregistered card three times/unregistered fingerprint five times. How to stop warning alarm: PIN code, Card / Fob.

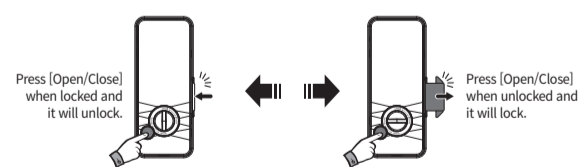
How to lock from Inside

1. In Auto lock mode: When the door is closed, door is locked with beep sound automatically. 2. In Manual lock mode: Press [Open/Close] button to lock the door.

How to open or close with Thumb turn from Inside (Manual)



How to open or close with [Open/Close] button from Inside (Auto)



How to set double lock function

1. [Double lock] Set up: While door is unlocked Press [Open/Close] button for 3 seconds. 2. [Double lock] Cancel: While double locking mode is on Press [Open/Close] button. Note: In [Double lock] mode, from inside, you can release lock using thumb turn. Intrusion alarm function still activate while in [Double lock] mode. Even in door is unlock status, [Double lock] mode can be enabled. When volume is set to "mute", only the indicator of [Double lock] mode is blinking without sound.

Auto lock function / Auto relocking function

1. Auto lock function: When the door is closed, it will be locked automatically. Note: Auto relocking system is different from "Auto lock". If the door is not opened within 7 seconds after input PIN code, it will be relocked automatically. 2. Auto relocking system: If the door is not opened within 7 seconds after input PIN code, it will be relocked automatically to protect user's property.

How to change Normal mode / Safety mode

Normal mode: ideal for new users or low security environments. Safety mode: higher security level via use of a manager PIN code. Provides individual registration and deletion function. PIN code: 10 entries (6-12 digits) / Card / Fob: 50 entries / Fingerprint: 50 entries. How to change from normal mode to safety mode: [R] button, Card / Fob, Fingerprint, UC, MC, RC. How to change from safety mode to normal mode: [R] button, Card / Fob, Fingerprint, UC, MC, RC.

Normal mode

Normal mode keypad sequence: REG. PIN code, Card / Fob, Fingerprint; DEL. All Card / Fob, All Fingerprint. Safety mode (Manager) keypad sequence: Change Manager code, REG. Manager Card / Fob, DEL. All manager Card / Fob.

Safety mode

Warning: Please do not forget manager PIN code. If you forget this number, please contact to your local agency. Keep the door open while you register PIN code, Card / Fob to prevent yourself from accidentally getting locked out. PIN code: 10 entries (6-12 digits) / Card / Fob: 50 entries / Fingerprint: 50 entries. [R] button, Card / Fob, Fingerprint, UC, MC, RC.

Safety mode keypad sequence: REG. PIN code, Card / Fob, Fingerprint; DEL. All Card / Fob, All Fingerprint. Safety mode (Manager) keypad sequence: Change Manager code, REG. Manager Card / Fob, DEL. All manager Card / Fob.

How to select the language

Language selection keypad: English (2, 3, C, #, 1), Chinese (2, 3, C, #, 2).

Using the Milre Smart App [Optional]

Wireless communication device installation: BTP-10. Note: Please fit the socket in the correct orientation. Connecting with the mobile app: 1. Install the Milre Smart App via the APP Store or Google Play. 2. Activate the app (new user must register account first) and press the "G" icon at the top of the screen and select a door lock from the list. 3. Connect the door lock by following the guide provided in the app. On the lock: Press and hold the [R] button for 3 seconds. Then, press 2 on the keypad, press 2, enter the PIN code followed by the [#] button. Disconnecting the app from the door lock: 1. Press and hold the [R] button for 3 seconds. 2. Then, press 2 on the keypad, press 2, enter the PIN code followed by the [#] button. Pairing your bluetooth gateway with the mobile app: 1. Plug in the gateway making sure the power is on. 2. Activate the Milre Smart App, press the "G" icon at the top of the screen, and select a gateway from the list. Finish pairing your gateway by following the guide provided in the app. Note: Bluetooth gateway are sold separately. It is recommended the gateway is plugged in nearby the door lock. Bluetooth gateway can be removed using the Milre Smart App.

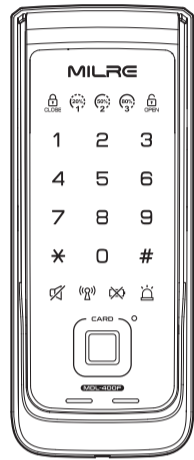
Product Warranty

The warranty period shall be one year from the date of installation. (for agency)

Warranty form table with fields: Model, Serial No, Purchase Date, Agency, Customer, Address, Phone, Installer, Phone.

Please keep this warranty for your after-sales service. You may have to pay for the service if you fail to present the warranty. Failure to fill out form fields such as purchase date may void warranty. The product may not be regarded as genuine, if no serial number is described on the warranty.

用戶手冊 MDL-400F



▲ 注意
必須領到由銷售單位或負責人填寫的產品質量保證書。
產品質量保證書必須準確填寫，否則售後服務時會影響您的利益。
※ 為了性能上的改善，有可能會隨時更改本產品的功能與設計並不預先通知。

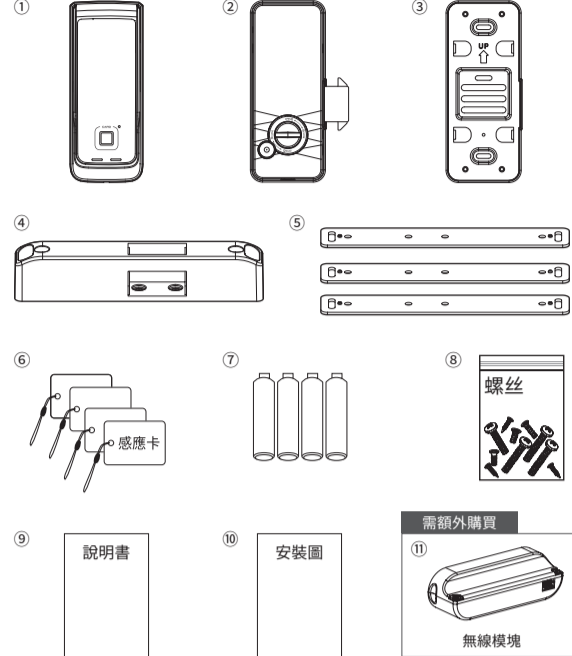
安全注意事項

- 請勿擅自拆卸或任意改造本產品**
擅自拆卸或改造會對產品造成損傷導致財產損失，產品的檢修聯繫專業的售後服務公司和我公司客戶服務中心。
- 在產品上產生有害氣體洩漏或噴發煙霧時**
請及時取下電池，要不然會對產品造成巨大的損傷。
- 有害液體或氣體洩漏**
若產品外部接觸高濕度環境，請及時用柔軟的抹布擦拭幹淨若發現內部有進水或其他液體進入時，請立即卸下電池。
- 定期清潔和檢查**
建議每6個月進行電池電量及漏液檢查並清潔電池連接處的接觸彈簧如果發現有漏液現象，請立即卸下電池，用幹布擦除漏液並更換新的電池，並在處理完畢後立即用香皂洗手。
- 禁止使用易燃物質擦拭產品**，比如含有酒精或苯類成分的物質
使用此類物質會對本產品的外觀造成損傷或火災的隱患。
- 電池不可暴露在高溫，靠近火源或浸潤在液體的地方**
若如此放置會導致電池漏液及爆炸危險請選用良好的電池，切勿使用質量堪憂的電池。
- 電池電極部位不要寫鑰匙或金屬物接觸**
這可能會導致過熱及爆炸，造成傷害。
- 請勿在方舌伸出的狀態下關門**
這樣將損傷產品，導致故障。
- 鍵板上不能有強烈的衝擊**
混用新舊電池會影響電池的使用壽命及發生漏液和過熱現象，導致安全隱患。
- 不能混用新舊電池**
混用新舊電池會影響電池的使用壽命及發生漏液和過熱現象，導致安全隱患。
- 請勿將物品懸掛在把手上**
這樣容易產生產品故障。

產品特色

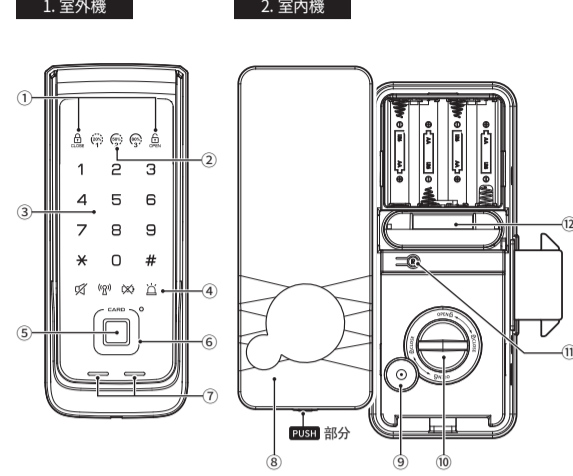
- 三合一 (指紋，密碼，卡片)**
除了密碼以外，還配有指紋，感應卡進行開鎖，給老人及兒童等不方便記憶密碼的人群提供了人性化的要求。
- 一般模式/管理模式**
一般模式：提供更加便利。
管理模式：提供更多管理功能。
- 具有虛位密碼功能**
與他人同行入戶時，先任意按下幾個數字(虛位密碼)，然後輸入正確密碼開鎖。採用這種無限虛位密碼功能系統，更進一步強化了保護密碼的功能。
- 防撬擾及防密碼破解警報功能**
連續輸入錯密碼，感應卡，指紋時，將啟動此功能並發出警報音，同時在一定的時間範圍內，功能運作將停止。
- 非法入侵警報功能**
如果門處於異常開鎖狀態，將發出警報音。
- 自動反鎖功能**
用密碼，感應卡或者指紋開鎖後，但門未打開時，將自動重新上鎖，保護財產安全。
- 雙重上鎖**
如果在屋內設置為雙重上鎖功能，在屋外用密碼，感應卡或者指紋無法打開門鎖。夜間更安全。
- 高溫感應警報**
感應到異常的高溫時，報警音響起。
·動作溫度：-15~55°C
·高溫感應：60°C±10°C
- 全程語音功能**
實時語音提示產品狀態，並在設置過程中提供輔助，人性化用戶體驗。
- 靜音功能**
在使用產品時可以隨時使用靜音功能，以避免開門時打擾其他人。
- 更換電池提示功能**
產品在使用中發生低電量情況時，會以提醒音和燈光閃爍進行提示。

產品結構及零件介紹



名稱	規格	備註
① 室外機	74mm(W) X 184mm(H) X 23.7mm(D)	包含室外機橡膠墊片
② 室內機	74mm(W) X 179mm(H) X 47mm(D)	
③ 室內機罩蓋	74mm(W) X 179mm(H) X 19mm(D)	
④ 鎖扣板	29mm(W) X 170mm(H) X 30mm(D)	
⑤ 塑料墊片	24mm(W) X 170mm(H) X 1mm(D) 3 EA	為了調整鎖扣板的高度
⑥ 感應卡	感應卡	
⑦ 電池	4節 (5號碱性電池)	
⑧ 螺絲	1套	
⑨ 說明書	英文，中文	含產品品質保證書
⑩ 安裝圖	英文	
⑪ 無線模塊	無線模塊	需額外購買
※ 安裝條件	門厚度: 40 - 80mm	

部件的名稱及功能



名稱	功能
① 上鎖/開鎖指示燈	表示產品上鎖/開鎖狀態。
② 狀態指示燈	通過指示燈反映操作狀態及確認電池電量。 ● 電池餘量 20% ● 電池餘量 50% ● 電池餘量 80%
③ 觸摸式數字鍵盤	輸入密碼，即可開鎖，或者設定及變更密碼。
④ 窗口圖標	☑：靜音指示燈 (靜音)；☒：電池指示燈 (電池)；☒：緊急警報指示燈 (緊急)
⑤ 指紋感應區	接觸已設定的指紋，可以開鎖。
⑥ 感應卡接觸區	接觸已設定的感應卡開鎖或設定感應卡。
⑦ 外部應急電源接口	電池電量耗盡時在外面使用9V方形電池接補此接口可以臨時供電，可以讓產品重新工作。
⑧ 電池蓋	按著PUSH部分，可打開蓋子。
⑨ 上鎖/開鎖鍵	按上鎖/開鎖鍵即可上鎖或開鎖。
⑩ 手動開鎖裝置	從內部手旋轉(手動開鎖裝置)時，即可開鎖或上鎖。
⑪ R鍵	設定，刪除及變更的時候要用 N鍵和 S鍵。
⑫ 無線模塊連接部	可安裝或拆下。(請外購買)

快捷圖標介紹

[R]鍵	C: 密碼	UC: 用戶密碼
: 按[]鍵	MC: 感應卡	MC: 管理者密碼
#: 按[#]鍵	RC: 指紋	RC: 新密碼
接觸觸控面板	虛位密碼	虛位密碼: 虛位密碼
9V方形電池	上鎖	緊急報警音指示燈

外部應急電源及鑰匙使用辦法



虛位密碼功能



從外部開鎖/上鎖

從外部開鎖

密碼 [R] C * [R] 感應卡 [R] 指紋 [R]

從外部開鎖 (靜音功能)

密碼 [R] C * [R] 靜音 [R] 指紋 [R]

從外部上鎖 (自動上鎖/手動上鎖)

自動上鎖 [R] [R] [R]

手動上鎖 [R] [R] 0 [R]

[自動模式/手動模式]設置

自動上鎖 [R] # [R] # [R] 5 [R]

手動上鎖 [R] # [R] # [R] 8 [R] 6 [R]

※ 設置[自動上鎖]，在開門時，會自動上鎖。
※ 設置[手動上鎖]，即使開門也不會上鎖。

快捷圖標介紹

[R]鍵	C: 密碼	UC: 用戶密碼
: 按[]鍵	MC: 感應卡	MC: 管理者密碼
#: 按[#]鍵	RC: 指紋	RC: 新密碼
接觸觸控面板	上鎖	虛位密碼: 虛位密碼
9V方形電池	緊急報警音指示燈	

更換電池

電池標誌閃爍，同時發出電池更換警告音。
把室內機上的電池蓋打開，更換5號碱性電池4節。

介紹其他功能

調整語音音量

最小 [R] # [R] C [R] # [R] 1 [R]

中等 [R] # [R] C [R] # [R] 2 [R]

最大 [R] # [R] C [R] # [R] 3 [R]

設定一次性密碼

設定 [R] # [R] C [R] # [R] 2 [R] RC [R] # [R] RC [R] # [R]

調整操作音音量

音量加大 [R] # [R] C [R] # [R] 3 [R]

音量減小 [R] # [R] C [R] # [R] 7 [R]

檢查鎖具狀態

語音 [R] # [R] C [R] # [R] 4 [R]

確認電池用量

確認電池用量 [R] # [R] C [R] # [R] 5 [R]

防撬擾及防密碼破解警報功能

動作 輸入密碼或感應卡三次，輸錯指紋五次 [R]

如何解除非法侵入警報功能

密碼 [R] C [R] * [R] 感應卡 [R]

從內部上鎖 (自動上鎖/手動上鎖)

1. 自動上鎖設置下上鎖

2. 手動上鎖設置下上鎖

如果在[自動上鎖]設置下關門時，發出「嗶嗶」聲，同時可自動上鎖。

關門後按[上鎖/開鎖]鍵，發出「嗶嗶」聲，同時可上鎖。

從內部操作[手動開閉裝置] (手動)

按逆時針方向旋轉，即可上鎖。

按順時針方向旋轉，即可開鎖。

從內部操作[上鎖/開鎖]鍵 (自動)

要開鎖時按此鍵，則可以開鎖。

要上鎖時按此鍵，則可以上鎖。

雙重上鎖功能

1. [雙重上鎖]設置

2. [雙重上鎖]設置

① 須知事項

- 要設置[雙重上鎖]時，關門後請設置一下。
- [雙重上鎖]狀態情況下也從內部手旋轉[手動開鎖裝置]時，即可開鎖或上鎖。
- 在[雙重上鎖]設置下，非法進入緊急報警功能依然生效。

自動上鎖/自動反鎖功能

- 自動上鎖功能**
是指關門後門鎖將會自動上鎖的功能。
- 自動反鎖功能**
用密碼、感應卡與指紋開鎖後，七秒內不關門時將自動上鎖保護顧客的財產。

切換一般模式/管理模式

一般模式：提供更加便利，原設置為一般模式。
管理模式：提供更多管理功能。

·密碼：10組 (6-12位數) / 感應卡：50張 / 指紋：50張

[R]鍵 [R] 感應卡 [R] 指紋

UC: 用戶密碼 MC: 管理者密碼 RC: 新密碼

管理模式切換到一般模式

1	2	3	4	5	6	7	8	9	10
[R]	#	UC	#	MC	#	MC	#		

一般模式切換到管理模式

1	2	3	4	5	6	7	8	9	10
[R]	#	MC	#	UC	#	UC	#		

一般模式

設定	密碼	1	2	3	4	5	6	7	8	9
密碼	[R]	1	4	RC	*	...	*			
感應卡	[R]	1	5	*				
指紋	[R]	1	6	[R]	*					
所有的感應卡	[R]	2	5							
所有的指紋	[R]	2	6							

※ 陰影部分是重複設定或者刪除

管理模式

△ 小心不要忘記或混淆管理密碼。
在管理模式狀態下，要變更所有的設定時，需要管理密碼。

·密碼：10組 (6-12位數) / 感應卡：50張 / 指紋：50張

[R]鍵 [R] 感應卡 [R] 指紋

UC: 用戶密碼 MC: 管理者密碼 RC: 新密碼

管理模式

設定	密碼	1	2	3	4	5	6	7	8	9	10	11	12
密碼	[R]	1	4	MC	#	RC	#	RC	#	*			
感應卡	[R]	1	5	MC	#	#	輸入兩位序號	#	[R]	*			
指紋	[R]	1	6	MC	#	#	輸入兩位序號	[R]	三次	#	*		
所有的感應卡	[R]	2	5	MC	#	#							
所有的指紋	[R]	2	6	MC	#	#							
單獨感應卡	[R]	3	5	MC	#	#	輸入兩位序號	#	*				
單獨指紋	[R]	3	6	MC	#	#	輸入兩位序號	#	*				

管理模式(管理者)

變更 管理者密碼	[R]	8	4	MC	#	RC	#	RC	#			
設定 管理者感應卡	[R]	8	5	MC	#	#	#	*				

※ 管理者卡可以設定3張感應卡。
※ 陰影部分是重複設定或者刪除。
※ 感應卡或者指紋的兩位序號是從01到50。

怎麼選擇語音

英文	[R]	2	3	C	#	#	1			
中文	[R]	2	3	C	#	#	2			

如何使用Milre Smart應用程式

安裝無線模塊 (可選的)

BTP-10

· 請匹配插座的方。

- 打開電池蓋後拆下所有的電池。
- 把無線模塊安裝在無線模塊連接部。
- 確認(+, -)方向，再放入全部電池。
- 如果成功的話，將響起可聽見的旋律。

① 須知事項

- 無線模塊 (BTP-10) 單獨出售。

與Milre Smart應用程式連接

- 請在APP Store或Google Play下載Milre Smart App。
- 啟動應用程式 (新用戶必須先註冊帳戶)，然後按屏幕頂部的“+”圖標，從列表中選擇一個電子鎖。
- 連接電子鎖按照應用程式中提供的指南。

在電子鎖上:
按住 [R] 3秒。
請按 [2], [1] 並輸入密碼然後按 [R]。

※ 掃描二維碼。

斷開應用程式與電子鎖的連接

- 按住 [R] 3秒。
- 請按 [2], [2] 並輸入密碼然後按 [R]。

如何配對藍牙網關與應用程式

- 插入網關，確保電源已打開。
 - 啟動Milre Smart應用程式，按下屏幕上方的“+”圖標，然後從列表選擇一個網關。
 - 完成網關配對按照應用程式中提供的指南。
- ※ 在配對網關之前，請確保您的手機有 Wi-Fi 連接。

① 須知事項

- 藍牙網關單獨出售。
- 建議將網關插在電子鎖附近。
- Milre Smart應用程式可以刪除藍牙網關。