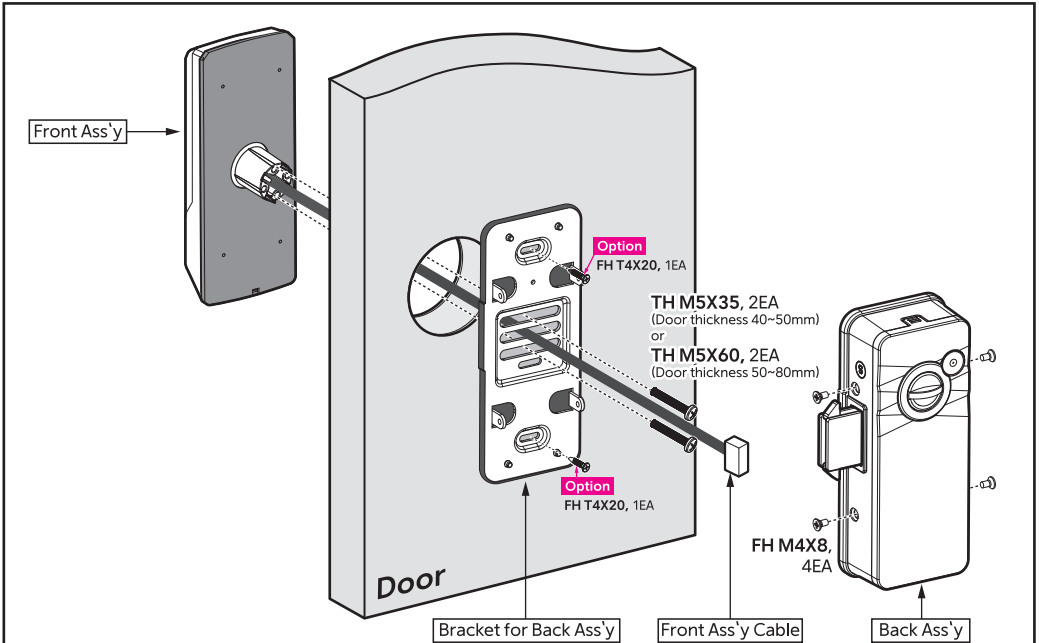
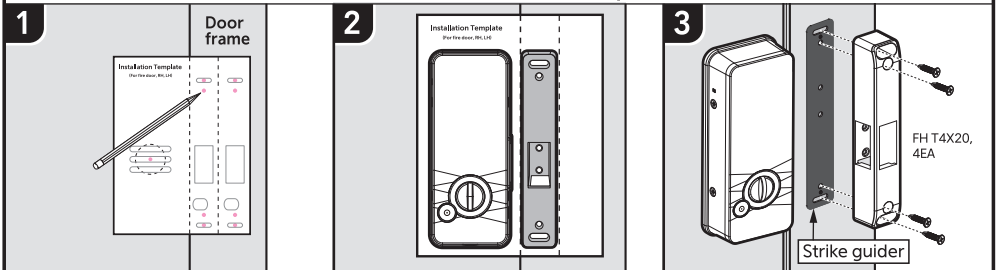


Installation Exploded View

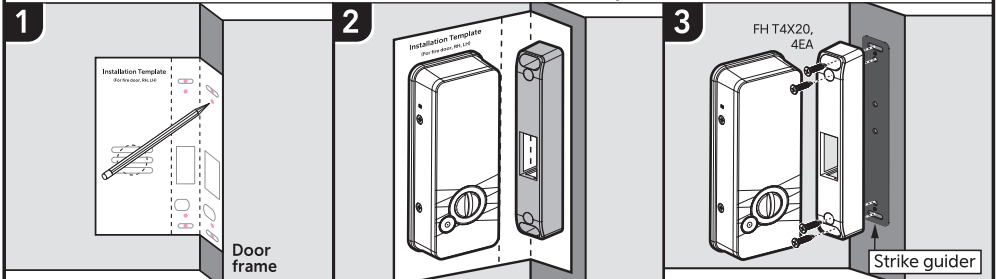
Rev.0



The door frame "—" shape




The door frame "L" shape



※ Strike guider : Use the strike guider if strike height adjustment is required.

Installation Template

(For fire door, RH, LH)

Option → 
Recommend to use for higher security.

41 mm
(The door frame "—" shape)

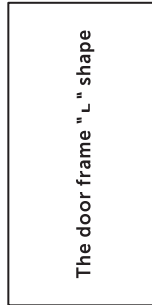
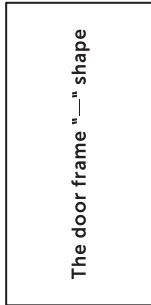
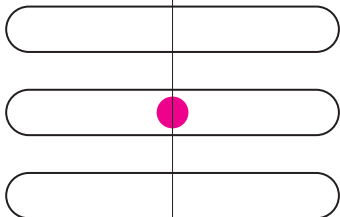
15 mm
(The door frame "—" shape)

71.5 mm
(The door frame "L" shape)

18 mm
(The door frame "L" shape)

Folding line

Folding line



Recommend to use for higher security.

Option → 



Excessive screw engagement can damage the product and door.
Please install the door and the product within the strength that does not bend.

